

ras

DIRECT TO STORE

SUPPLY CHAIN MANAGEMENT

ASSET FOCUSED • SOLUTION BASED • RELATIONSHIP LED

MAXIMISE ON SHELF AVAILABILITY WITH DTS

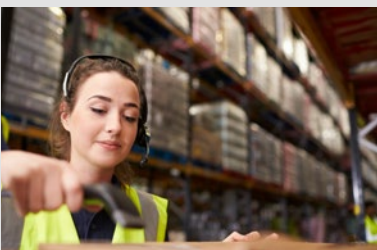
Deploying direct solutions to take the unknown out of the supply chain...

Omni-channel and short-life product demand often requires direct to store deliveries. The delivery accuracy of these high demand items may sometimes go unchecked due to resource divert.

Our nationwide network of mobile auditors are ready to conduct audits on picked cages giving store operations the assurance and confidence in logistics, picker accuracy and compliance.

Our experience shows dairy products delivered carry an average error rate of 1.3%, bread and bakery at 1.1% error rate (gross) and export household/clothing between 0.3% and 1.7% depending on product group.

With RAS you can be assured our Auditors will ascertain your delivery error rate which allows store colleagues to concentrate on customers.



THE DTS PRINCIPLE

- 01** To complete 100% delivery check in sample stores at store back door.
- 02** To move short life product straight to shelf and improve availability.
- 03** To provide accountability for supplier inaccuracies.



CUSTOM
SOLUTION
APPROACH



BUYER SUPPLIER
RELATIONSHIP
FOCUSED



TIME
CRITICAL
MANAGED

ras | SUPPLY CHAIN MANAGEMENT

THE DTS PROVISION

- Mobile Auditors arrive at sample stores within a given supplier's delivery window.
- Sample audits are conducted reducing the need for every delivery to be checked.
- Results instantly feedback to store and supplier.
- Deliveries can be accepted in 'Good Faith'.
- Data fed back to create overall estate accuracy percentage to calculate charge back and supplier performance.
- Whilst in store RAS teams can conduct PI counts, gap scans, compliance checks and top selling lines audits.

Over the last 4 years we have realised a saving of over £2 million from the direct to store auditing process due to resource reductions. As we embark on the next phase of the 'receive all' project we believe an additional £1.7m can be saved.

Leading FMCG retailer

RAS DTS provides significant benefits:



Greater on-hand visibility to aid head office and store relations.



Scalable supplier funded option; sample size can be scaled according to accuracy levels.



Improves availability of fast moving, short life stock.



Highlights leakages or errors within the supply chain.



Provides 100% valuation on integrity and supports improvements of over 30%.



Creates resource cost savings and allows greater use of store resource elsewhere.



Faster delivery turnaround with drop and go.

Secure, efficient and accurate supply chain management; **delivered.**