

ras

SUPPLY CHAIN MANAGEMENT

ASSET FOCUSED • SOLUTION BASED • RELATIONSHIP LED

LOAD ADHERENCE & MARSHALLING



PROVEN RESULTS WITH RAS 'LA & MARSHALLING'

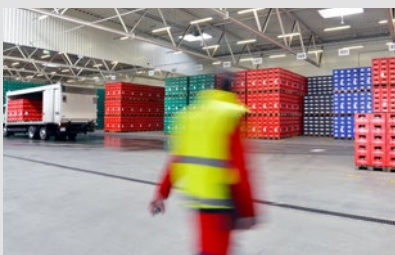
Employing intelligent processes to take the unknown out of the supply chain...

Often the focus on stock accuracy and impact to store is directed at despatch, however, our data shows left-off's, mismarshall or misguided delivery units cause a higher level of negative impact to store stock file than picker accuracy...

At RAS we provide Load Adherence checks on equipment/media count or compliance audits on randomly selected vehicle

loads, to ensure the right pallet/cage has been loaded on the right vehicle and select criteria has been met.

Our audits across all industries highlight an average marshalling error rate of almost 1%. By adding our LA and Marshalling audits, improvements of over 50% can be realised within the first 3 months.



THE LA PRINCIPLE

- 01** To sample check complete vehicle loads by DU.
- 02** To identify and resolve inaccuracies, dwell time and misguided DU's.
- 03** To identify and resolve inaccuracies and 'shrink' occurrences.



**CUSTOM
SOLUTION
APPROACH**



**EFFICIENT
EFFECTIVE**



**RETAILER/3PL
RELATIONSHIP
FOCUSED**

Main Office: Osprey House, Crayfields Business Park, New Mill Road, Orpington, BR5 3QJ
t: 0800 282 382 | e: enquiries@retailassetsolutions.com | w: www.retailassetsolutions.com



ras | SUPPLY CHAIN MANAGEMENT

THE LA & MARSHALLING PROVISION

- Auditors will select vehicles for checking and conduct a delivery unit check, matching the despatch note to what is on the vehicle.
- Validation of vehicles being loaded safely to prevent accidents and ensure case integrity throughout the journey.
- Can be combined with pick accuracy audits, using the same audit team.
- Can be further enhanced with our RAS Tracca technology.
- Assurance of a recognised programme.

RAS Supply Chain has built a strong relationship with Morrisons by embedding their auditing services into our operation. RAS provide flexibility and always look to continually improve processes.

Amanpal Uppal
Wm Morrisons Supermarkets

A RAS LA & Marshalling provides significant benefits:



Faster delivery turnaround with drop and go at store due to greater assurance.



Reduced inaccuracies and 'shrink' and left offs.



Increased product availability in store.



Validated level of accuracy.



Highlights root causes and error reasons before despatch.



Management information through a clear and concise dashboard.

Secure, efficient and accurate supply chain management; **delivered.**